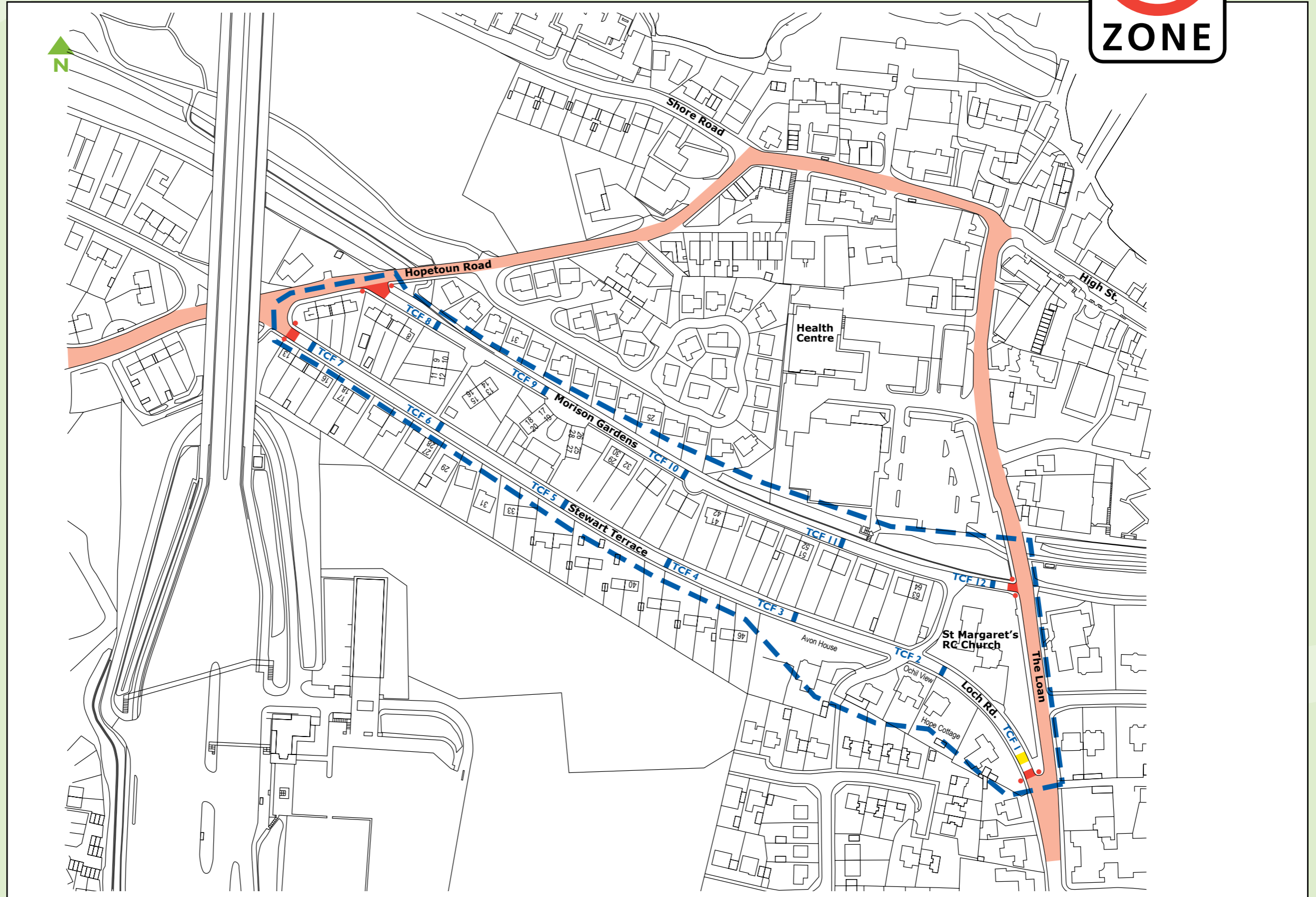


# Stewart Terrace & Morison Gardens



- Key**
- 20mph zone boundary
  - Routes to remain at existing speed limit
  - Property number e.g. 12
  - Proposed flush entry "gateway" treatment with 20mph signs
- TCF No.** Traffic Calming Feature
- Proposed asphalt road hump 3.7m wide
  - Proposed asphalt flat top table with crossing facilities



Safer to **walk**



Safer to **cycle**



Safer to **drive**